

Intelligent, Yet Simple Network Management

In modern networks, various types of equipment are installed. The OptivaView™ SNMP Management Suite makes remote management simple in its utilization of SNMP (Simple Network Management Protocol) offering a uniform software platform for efficient integration with other devices operating alongside Opticomm's Optiva™ Platform. The OptivaView™ SNMP Controller Card (Opticomm Model OPV-CTRL-IC) fits within any Optiva™ enclosure requiring only one slot. This agent collects the data coming from the personally designed Optiva™ systems and the OptivaView™ General User Interface Management Software Module analyses and displays the data to the user.

The OptivaView™ SNMS Controller Card can serve as an agent providing critical data to any SNMP based Management Software. An example of such software is the HP Openview Source. The client retains the ultimate discretion of whether to use the OptivaView™ software or an alternative, ensuring both independence and flexibility in system management.

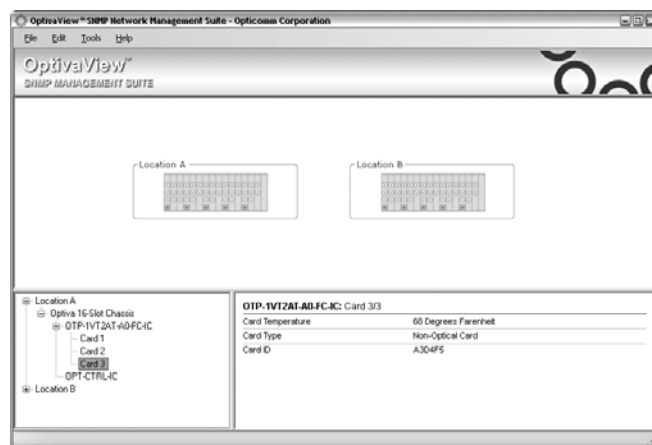
A Management Information Base (MIB) is integrated within the OptivaView™ SNMP Controller Card. The MIB collects, stores and provides all information required by the Network Management Software to understand the data presented by the OptivaView™ SNMP Controller Card. This means that regardless of which viewing medium you select, the designated software will receive all collected data.

The OptivaView™ General User Interface Management Software Module will enable fiber optic link status, bandwidth management, operations and fault detection, logging, and system check features to run diagnostics for system health inspection and verification. These features ensure that you are constantly provided with important data for essential optical system management and that you remain aware of critical concerns to ensure maintenance of a safe and healthy network at all times.

The OptivaView™ General User Interface Management Software offers a professionally designed and user-friendly interface maintaining a simple yet comprehensive tunnel view to your optical network.

OptivaView™ Features:

- SNMP
- Remote monitoring
- Bandwidth Management
- System Diagnostic Health Inspection
- Fault Alarm Notification
- Fault Tracing Log
- Manageable by any SNMP GUI



Sample Network Display, OptivaView™ SNMP General User Interface

The Controller Card occupies a single slot in any Optiva™ chassis. The standard Controller Card can control all Optiva™ systems operating in a single chassis. Opticomm's Model CC-16-100 Chassis can accommodate up to 16 different insert cards.

The Controller Card connects to a standard 10/100 Ethernet Cable via the TCP/IP protocol. The user uses a standard web browser to configure and monitor the Optiva™ Platform. The system comes with the OptivaView™ General User Interface Management Software, however different interfaces can be used as the Controller Card contains an SNMP-based MIB to provide all information required to understand the data presented. This offers easy integration of Optiva™ Systems into any SNMP-based managed network.

The Controller Card will collect data from the cards situated within the Optiva™ Chassis via a daisy-chained backplane. Every chassis in which a Controller Card is situated will detect its presence and notify the user via an "NMS" LED located on the front of both the 4-Slot (OT-DTCR-4) and 16-Slot (OT-CC-16-100) Optiva™ Chassis Models.

Controller Card Technical Specifications

System	XD Memory Card
Ethernet port	
Type	10/100, IEEE802.3, full duplex capable
Connector	RJ45, UTP cable, EIA/TIA Category 3 or better
SNMP interface	SNMP ver 1.0, v2, v3 over UDP over IP, following SMI version 2.0 according to relevant RFCs
Networking	User Configurable IP Address

Versions Available

The OptivaView™ SNMP Management Suite* consists of the following products:

Product	Description
• OPV-3000	OptivaView™ General User Interface Monitoring Software Module, Standard Version
• OPV-CTLR-IC	OptivaView™ SNMP Controller Card

* The OPV-3000 Software Module (Standard Version) is provided with the purchase of a Controller Card at no additional cost.

Optiva™ Configurable
Communication Platform

Network Management

SDI & HD-SDI

Composite Video,
Audio & Data

RGB/VGA/DVI

Audio/FSK/Intercom

Data (Ethernet/Serial/USB)

CATV/RF & L-Band

Optical Switching, Routing
& Redundancy

Passive Multiplexing
Solutions

Enclosures, Racks
& Frames

Power Supplies
& Accessories